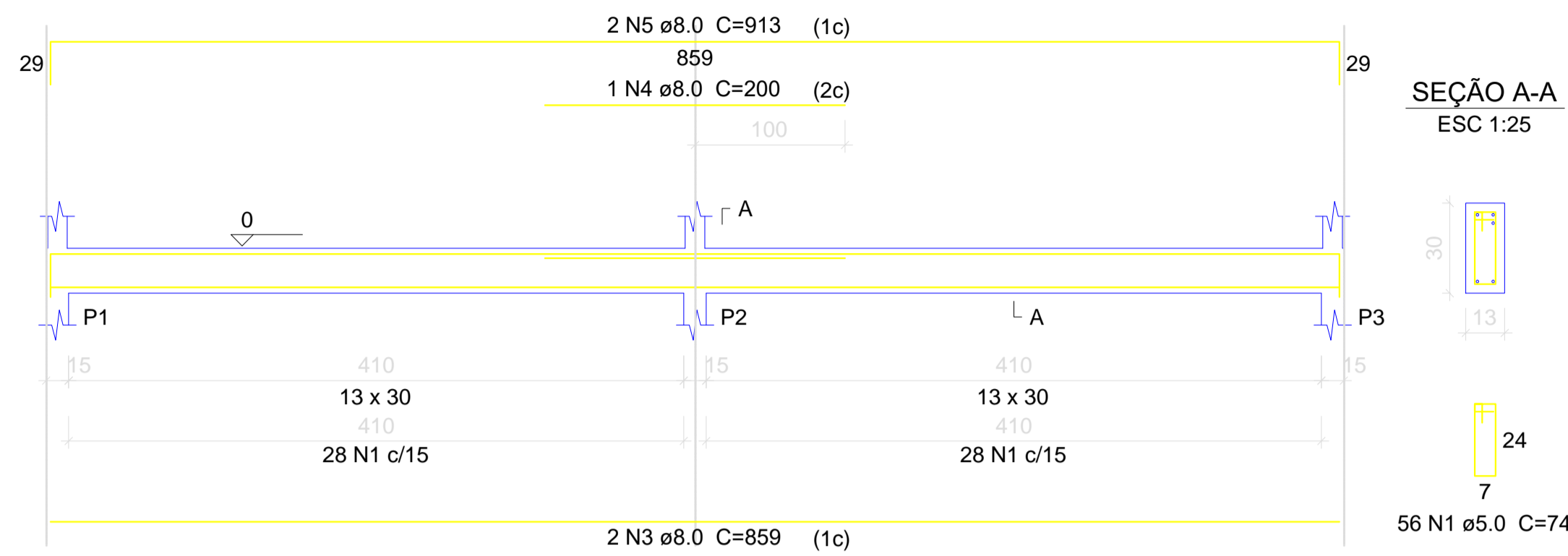
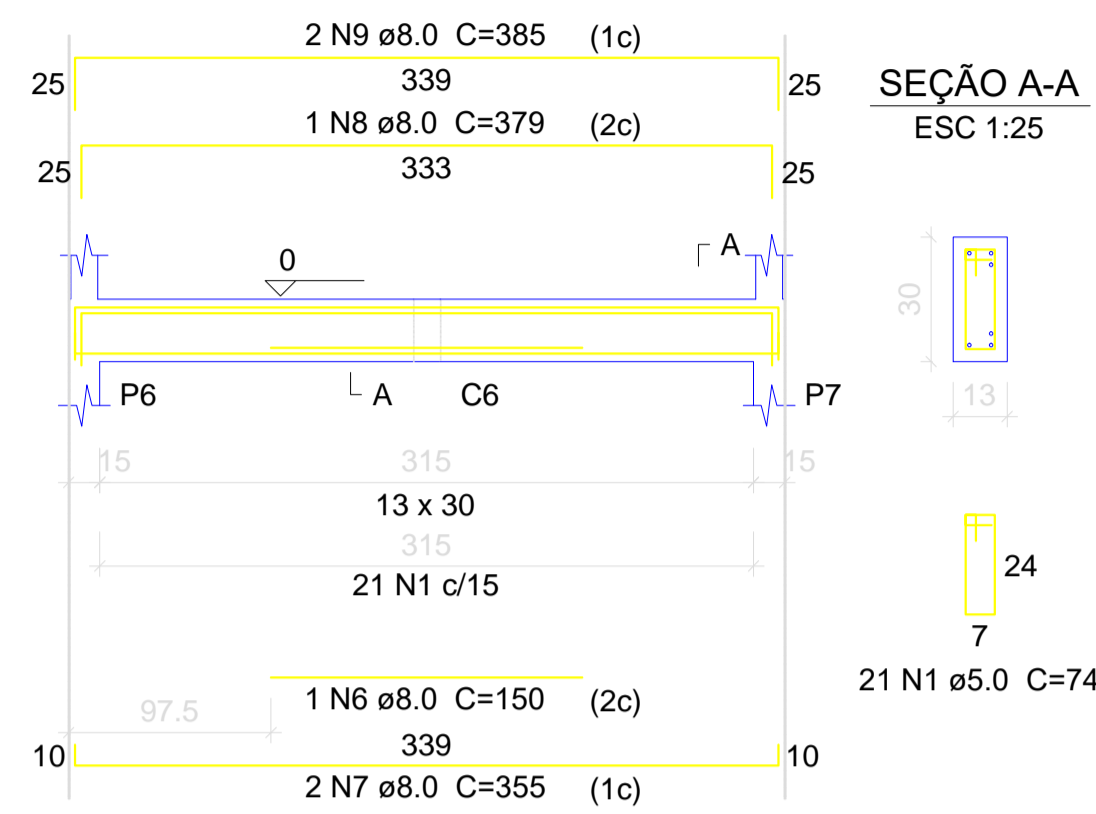


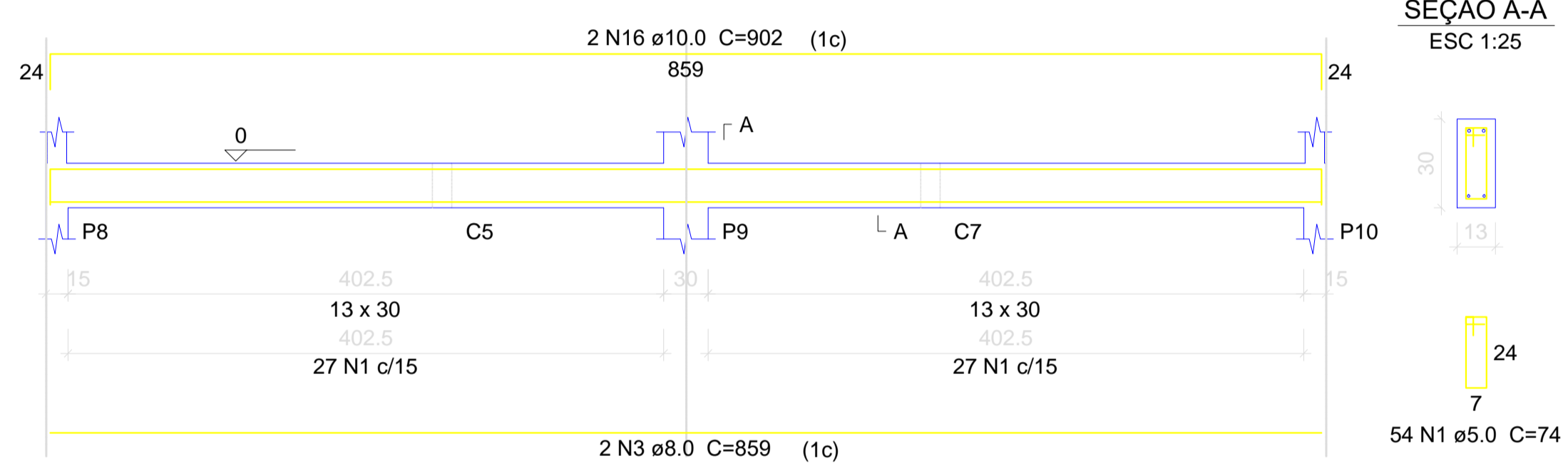
C1
ESC 1:50



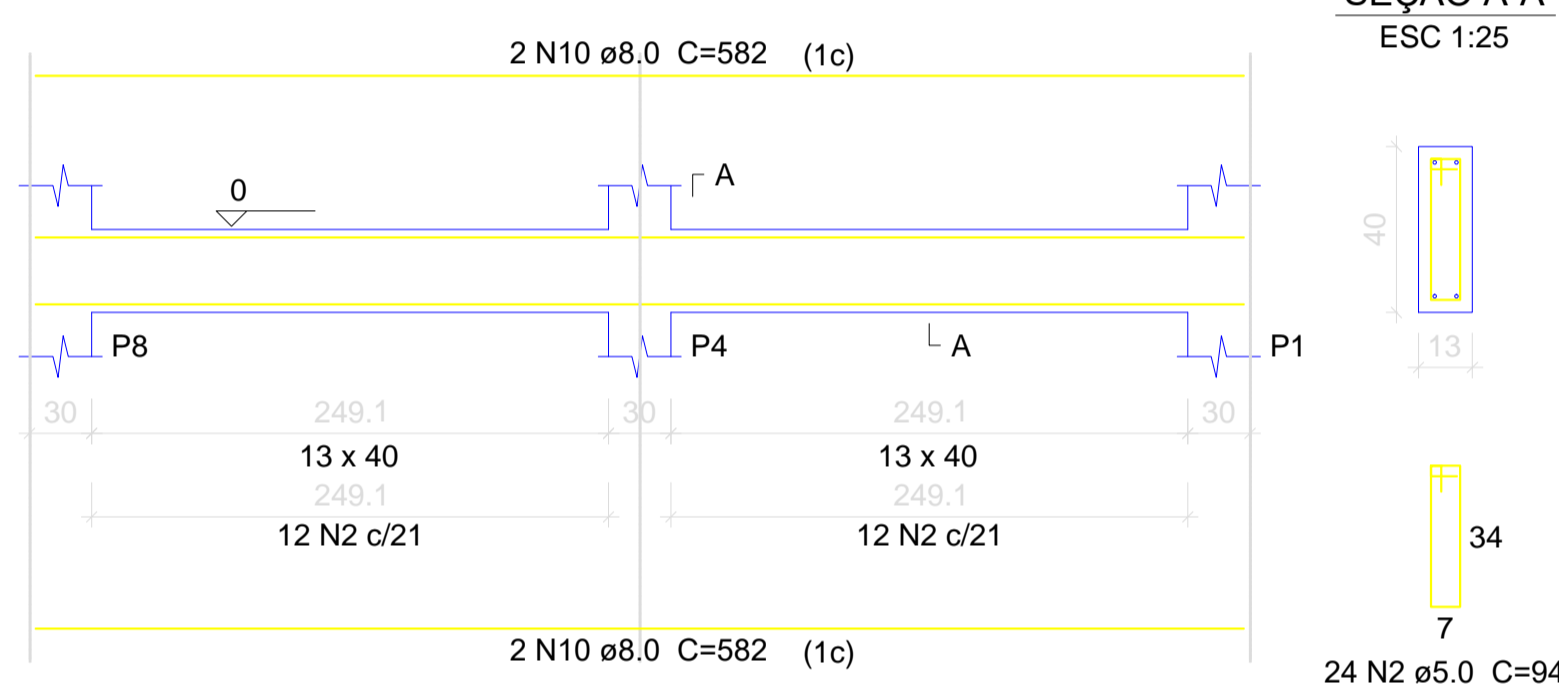
C2
ESC 1:50



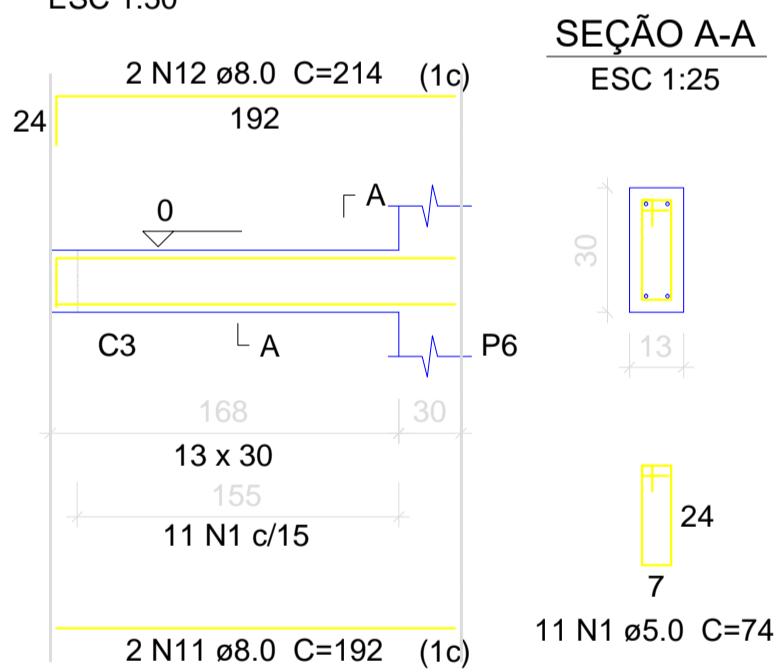
C3
ESC 1:50



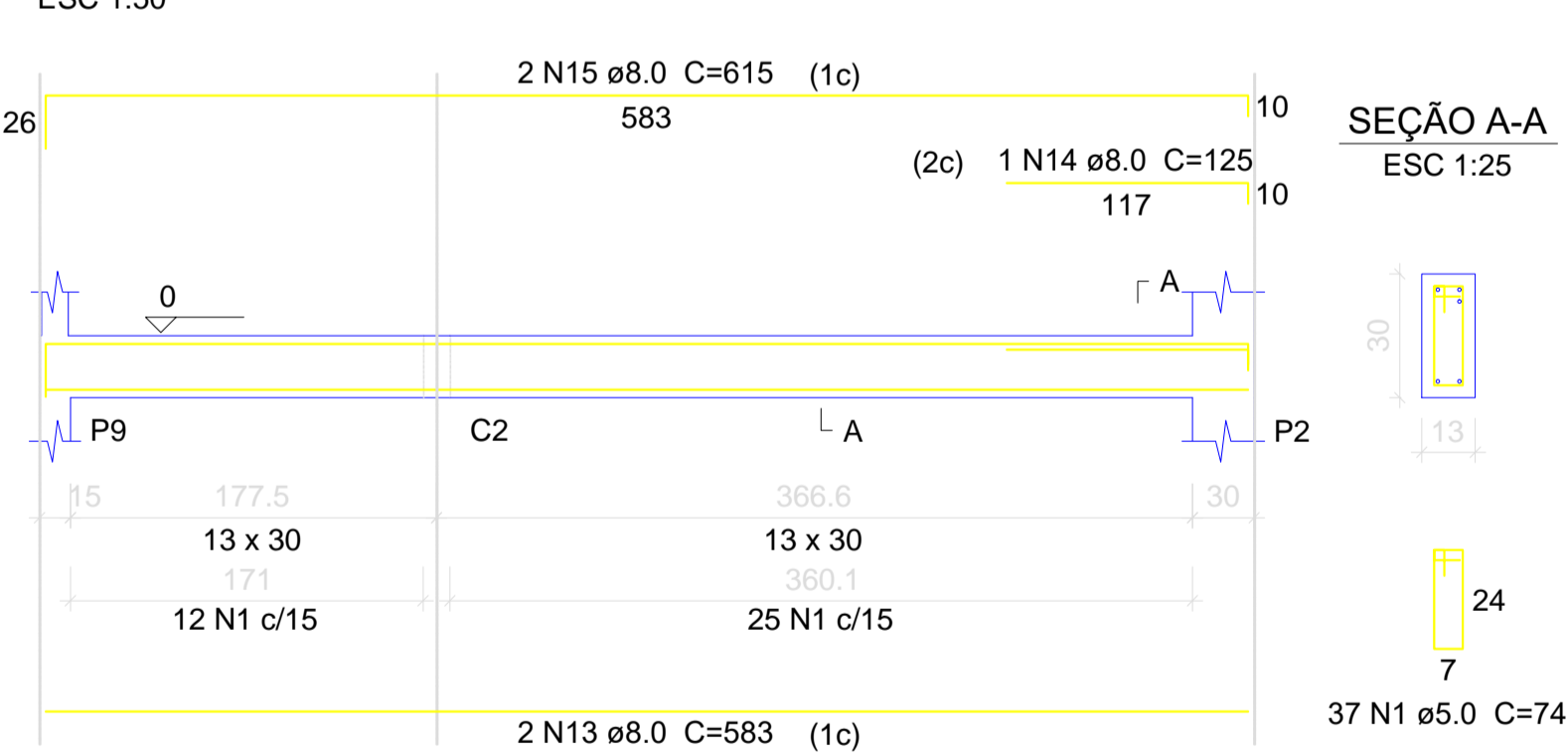
C4
ESC 1:50



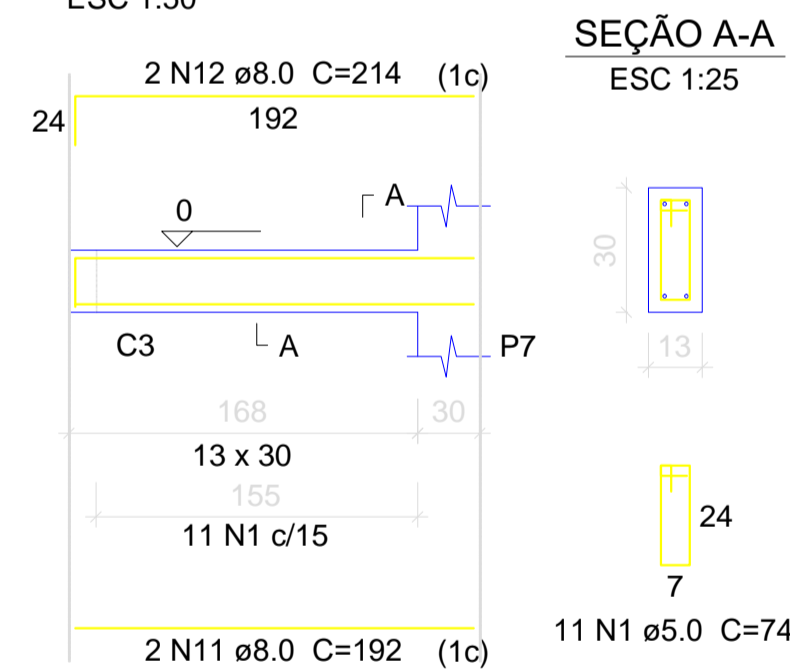
C5
ESC 1:50



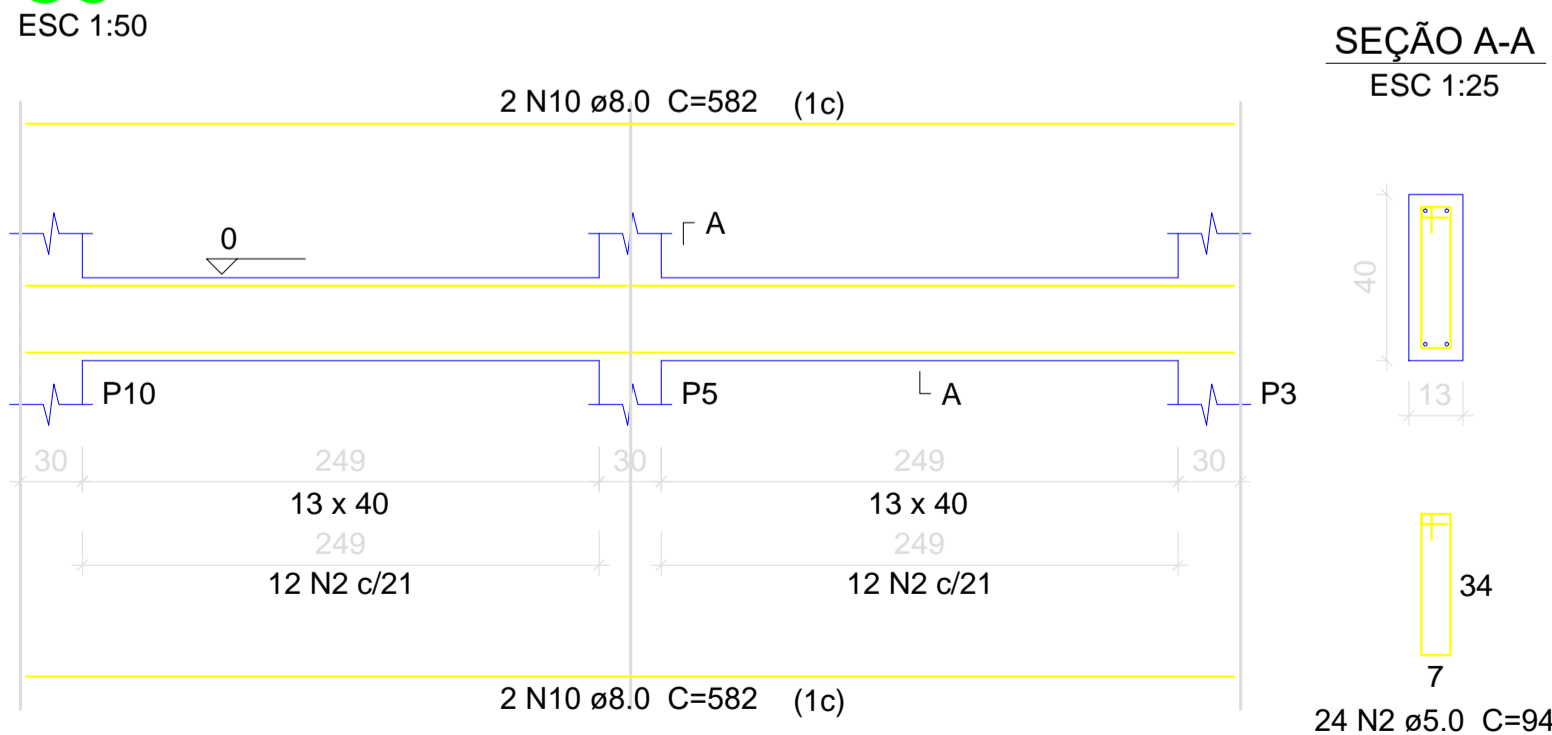
C6
ESC 1:50



C7
ESC 1:50



C8
ESC 1:50



ARMAÇÃO CINTAS

escala 1:75

Relação do aço

AÇO	N	DIAM (mm)	QUANT (Barras)	UNIT (cm)	C.TOTAL (cm)
CA60	1	5.0	190	74	14060
	2	5.0	48	94	4512
CA50	3	8.0	4	859	3436
	4	8.0	1	200	200
	5	8.0	2	913	1826
	6	8.0	1	150	150
	7	8.0	2	355	710
	8	8.0	1	379	379
	9	8.0	2	385	770
	10	8.0	8	582	4656
	11	8.0	4	192	768
	12	8.0	4	214	856
	13	8.0	2	583	1166
	14	8.0	1	125	125
	15	8.0	2	615	1230
	16	10.0	2	902	1804

Resumo do aço

AÇO	DIAM (mm)	C.TOTAL (m)	PESO + 10 % (kg)
CA50	8.0	162.8	70.6
CA60	10.0	18.1	12.2
PESO TOTAL (kg)		185.8	31.5
CA50	82.9		
CA60	31.5		

Volume de concreto (C-25) = 1.81 m³
Área de forma = 33.28 m²



PREFEITURA MUNICIPAL
SANTA MARIA DA BOA VISTA
ADMINISTRAÇÃO: ELIANE COSTA

DISCRIMINAÇÃO:
PROJETO DE REFORMA E AMPLIAÇÃO DA ORLA

CONTEÚDO: ARMAÇÃO CINTAS - WC COMUNITÁRIO
LOCAL: SANTA MARIA DA BOA VISTA - PE
EQUIPE TÉCNICA: ENGENHARIA: ALEX SOUZA CREA 053872/PE

ESCALA: 1/75
DATA: SETEMBRO 2015
PRANCHA: 04/07