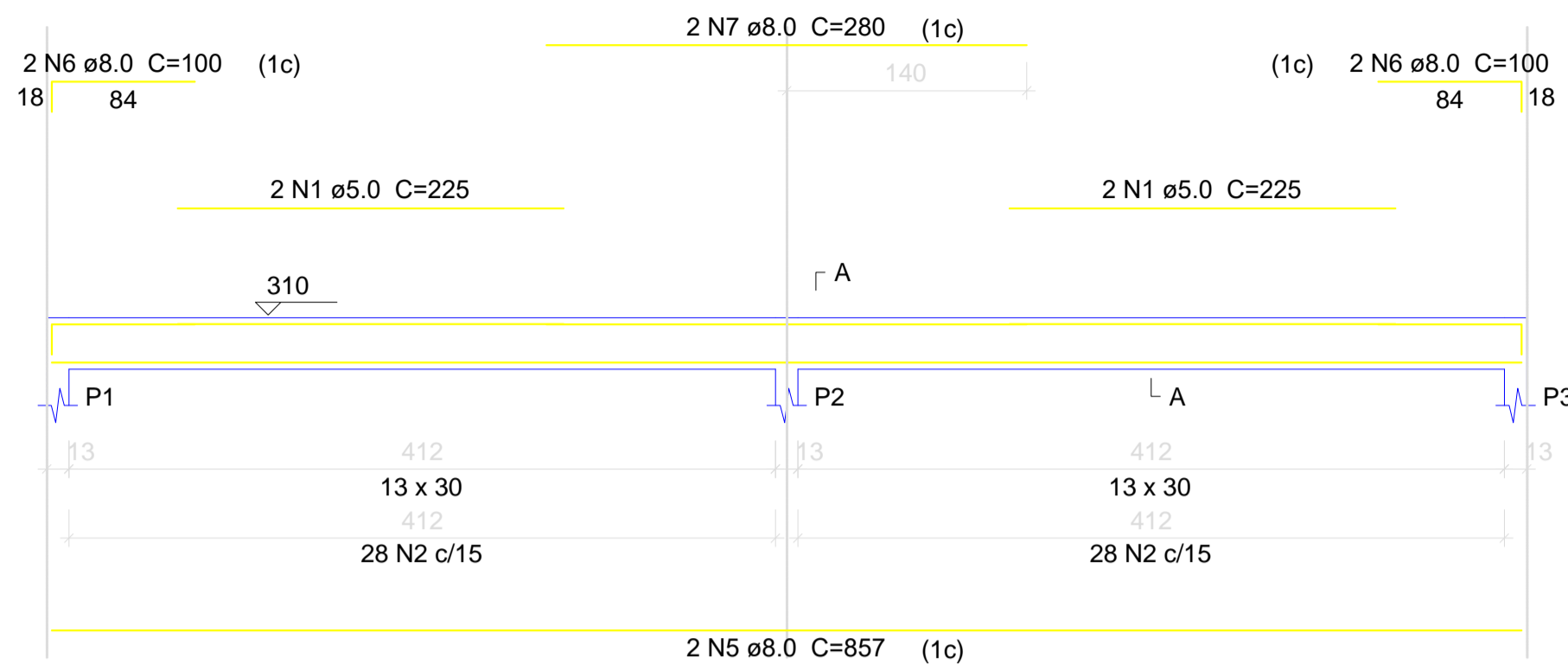
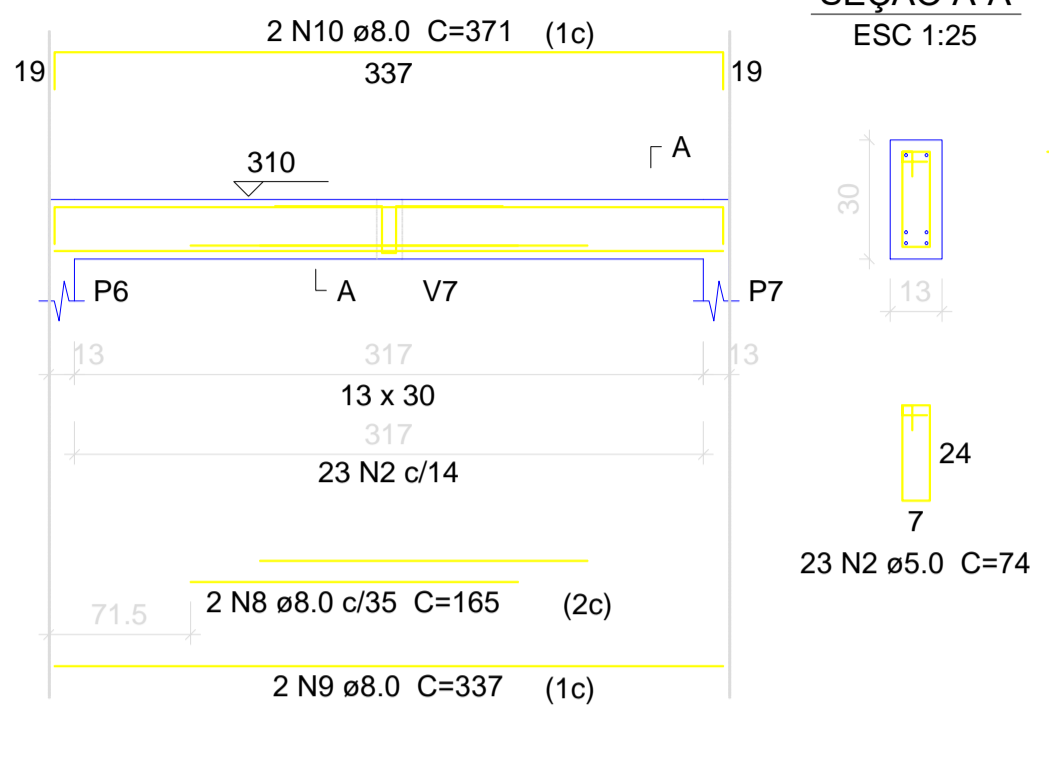


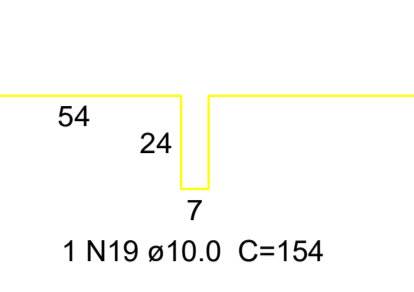
V1
ESC 1:50



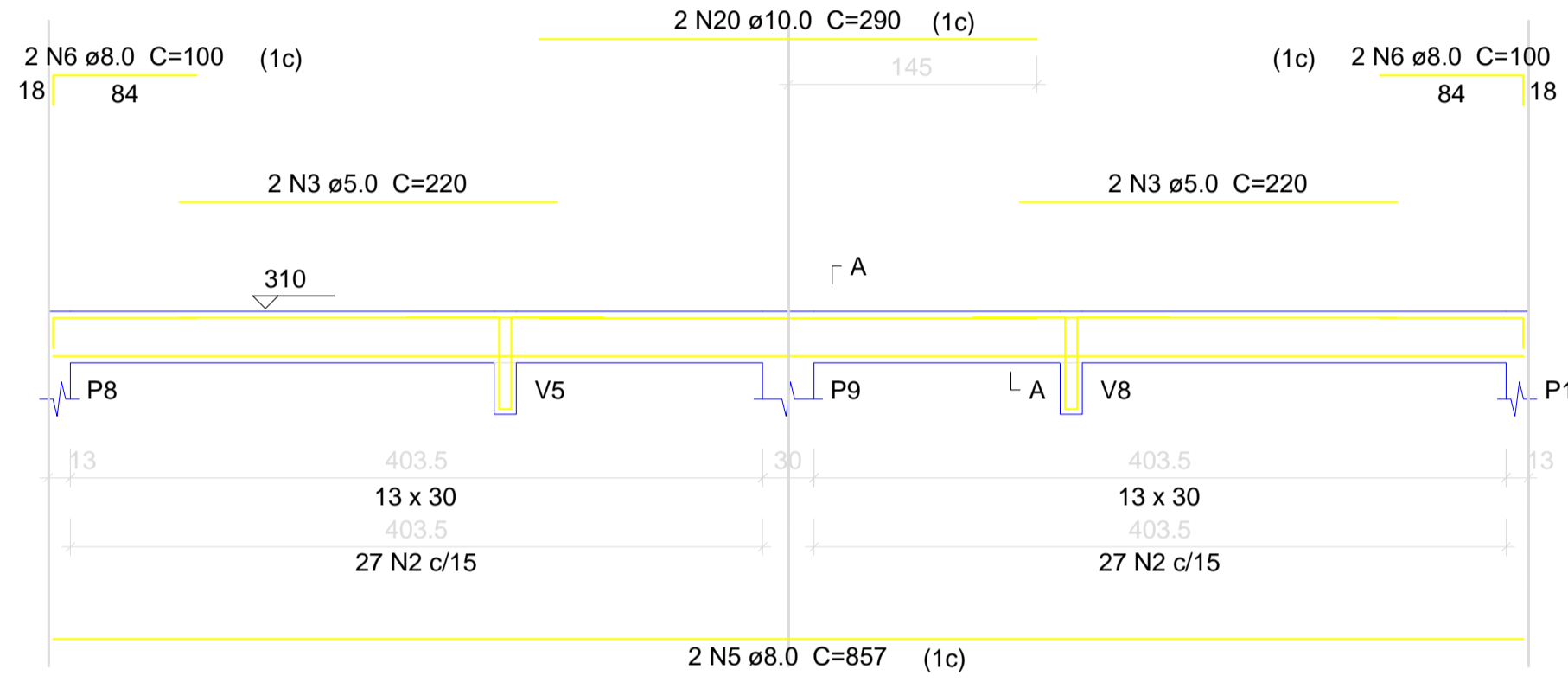
V2
ESC 1:50



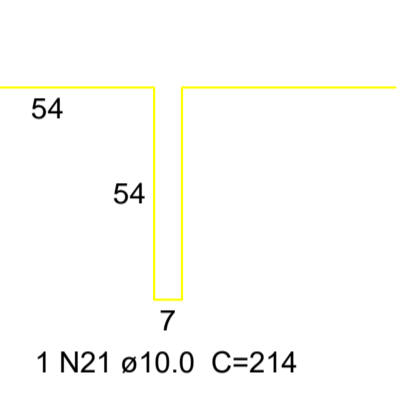
SUSPENSÃO V7
ESC 1:25



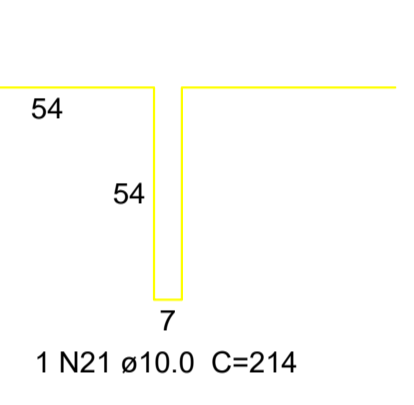
V3
ESC 1:50



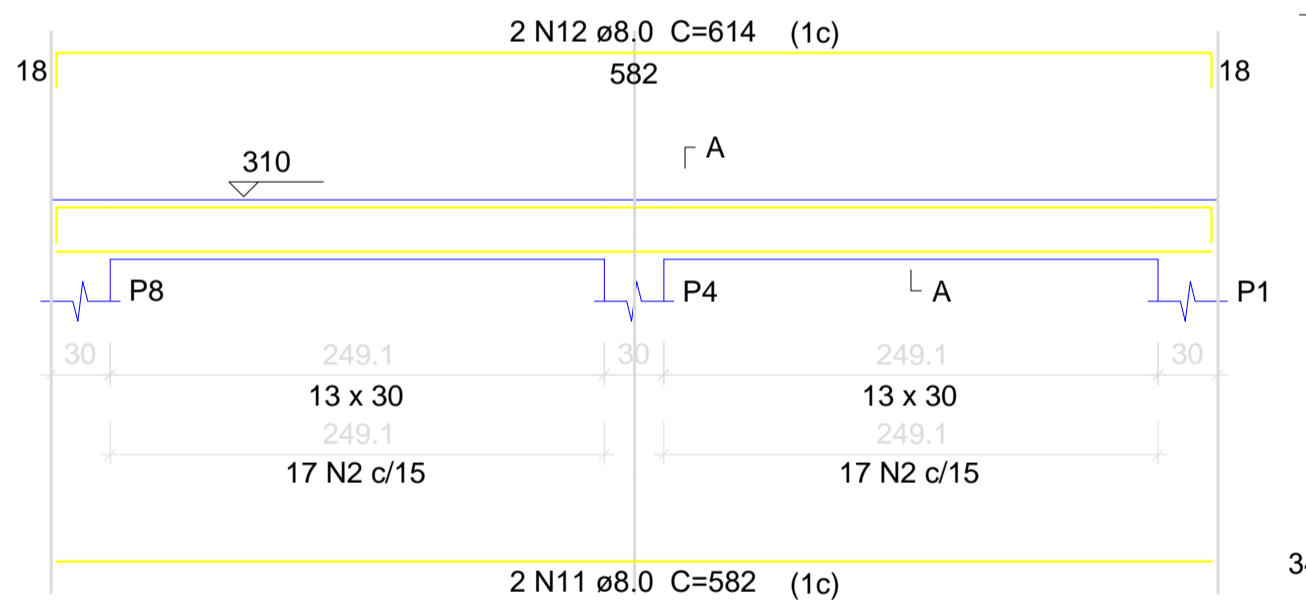
SUSPENSÃO V5
ESC 1:25



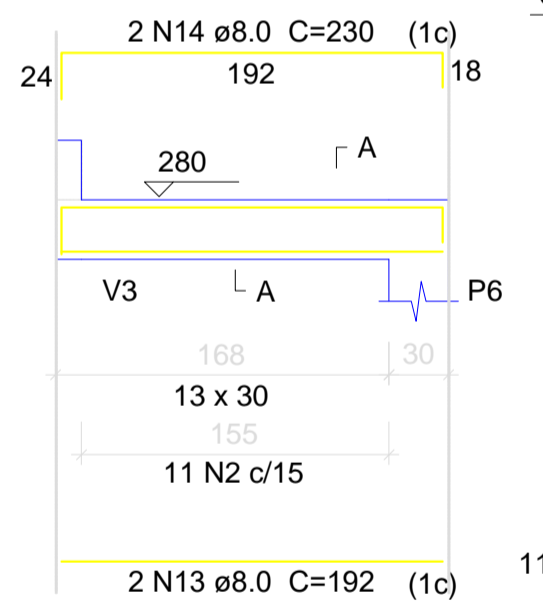
SUSPENSÃO V8
ESC 1:25



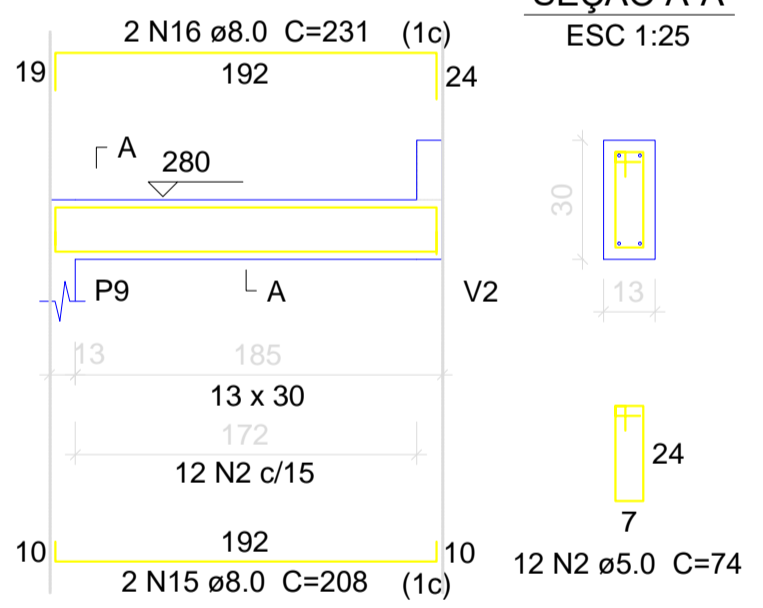
V4
ESC 1:50



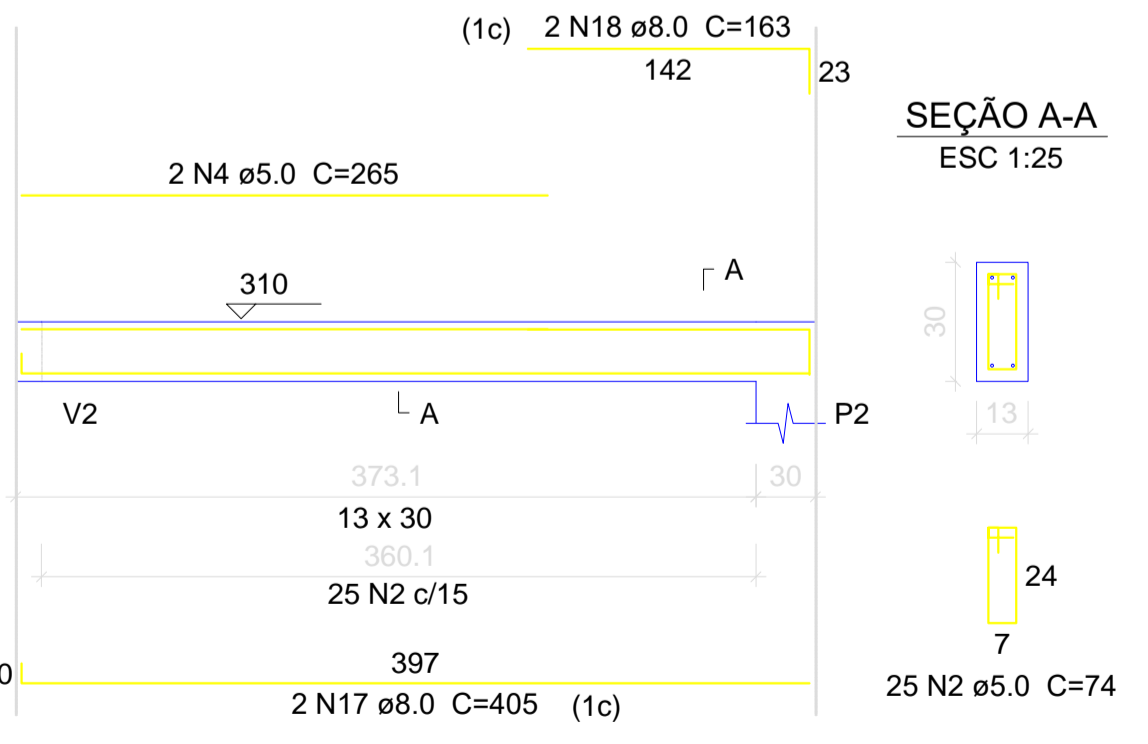
V5
ESC 1:50



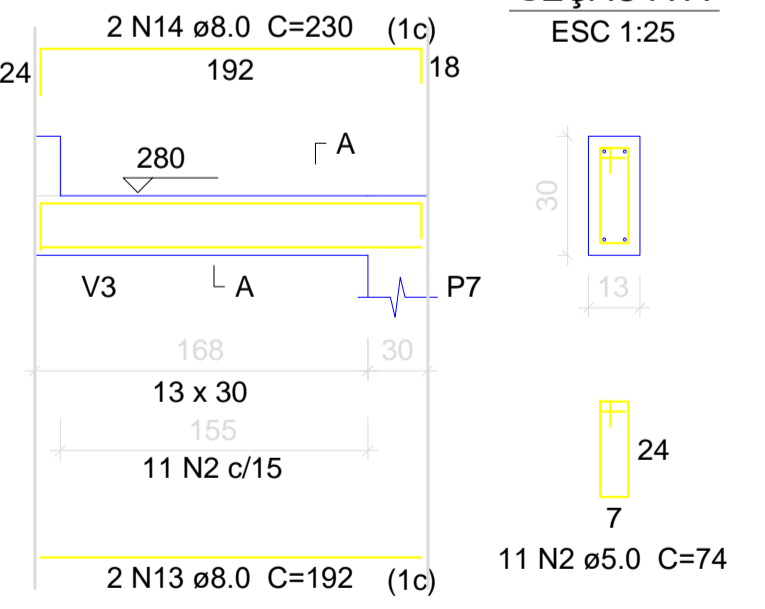
V6
ESC 1:50



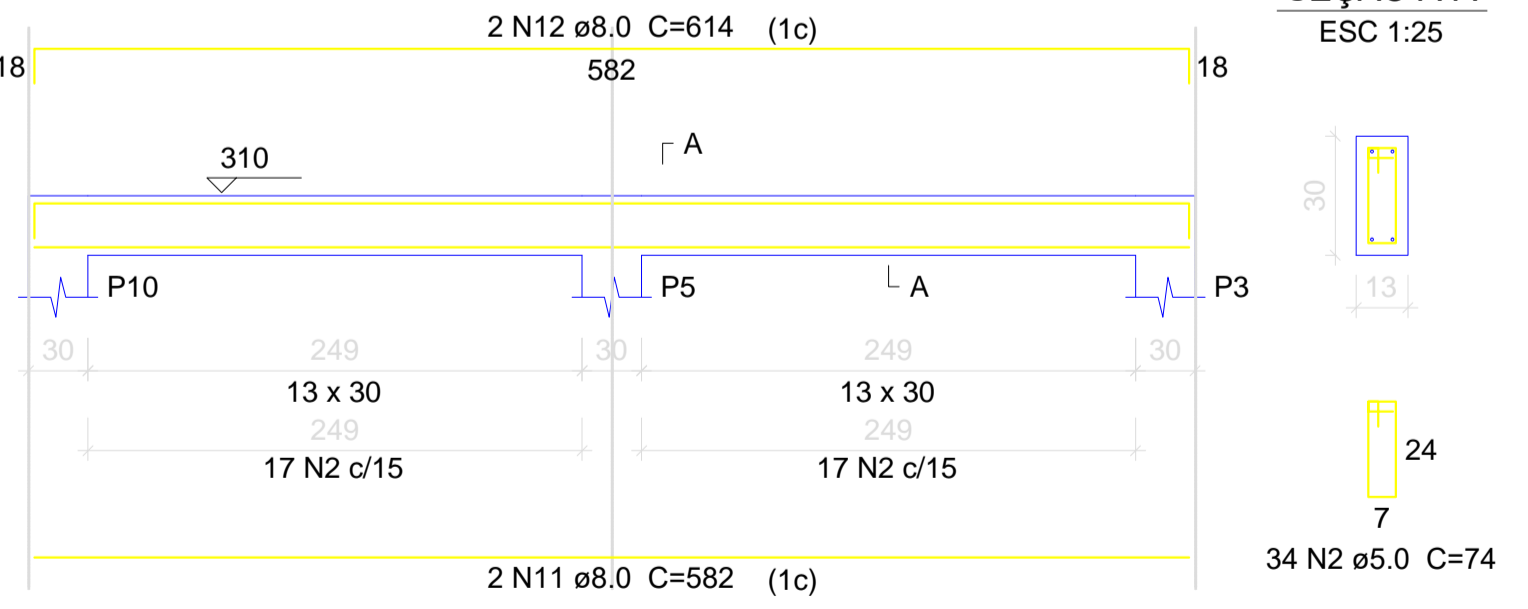
V7
ESC 1:50



V8
ESC 1:50



V9
ESC 1:50



Relação do aço

| AÇO | N | DIAM (mm) | QUANT (Barras) | UNIT (cm) | C.TOTAL (cm) |
|------|----|-----------|----------------|-----------|--------------|
| V1 | | | | V3 | |
| V4 | | | | V6 | |
| V7 | | | | V9 | |
| CA60 | 1 | 5.0 | 4 | 225 | 900 |
| | 2 | 5.0 | 260 | 74 | 19240 |
| | 3 | 5.0 | 4 | 220 | 880 |
| | 4 | 5.0 | 2 | 265 | 530 |
| CA50 | 5 | 8.0 | 4 | 857 | 3428 |
| | 6 | 8.0 | 8 | 100 | 800 |
| | 7 | 8.0 | 2 | 280 | 560 |
| | 8 | 8.0 | 2 | 165 | 330 |
| | 9 | 8.0 | 2 | 337 | 674 |
| | 10 | 8.0 | 2 | 371 | 742 |
| | 11 | 8.0 | 4 | 582 | 2328 |
| | 12 | 8.0 | 4 | 614 | 2456 |
| | 13 | 8.0 | 4 | 192 | 768 |
| | 14 | 8.0 | 4 | 230 | 920 |
| | 15 | 8.0 | 2 | 208 | 416 |
| | 16 | 8.0 | 2 | 231 | 462 |
| | 17 | 8.0 | 2 | 405 | 810 |
| | 18 | 8.0 | 2 | 163 | 326 |
| | 19 | 10.0 | 1 | 154 | 154 |
| | 20 | 10.0 | 2 | 290 | 580 |
| | 21 | 10.0 | 2 | 214 | 428 |

Resumo do aço

| AÇO | DIAM (mm) | C.TOTAL (m) | PESO + 10 % (kg) |
|------------------------|-----------|-------------|------------------|
| CA50 | 8.0 | 150.2 | 65.2 |
| | 10.0 | 11.7 | 7.9 |
| CA60 | 5.0 | 215.5 | 36.5 |
| PESO TOTAL (kg) | | | |
| CA50 | | 73.1 | |
| CA60 | | 36.5 | |

Volume de concreto (C-25) = 1.65 m³
Área de forma = 30.97 m²

ARMAÇÃO VIGAS 1º NIVEL

escala 1:75



**PREFEITURA MUNICIPAL
SANTA MARIA DA BOA VISTA**

ADMINISTRAÇÃO: ELIANE COSTA

DISCRIMINAÇÃO:
PROJETO DE REFORMA E AMPLIAÇÃO DA ORLA

CONTEÚDO: ARMAÇÃO VIGAS 1º NIVEL - WC COMUNITÁRIO LOCAL: SANTA MARIA DA BOA VISTA - PE

EQUIPE TÉCNICA: ENGENHARIA: ALEX SOUZA CREA 053872/PE

ESCALA: 1/75
DATA: SETEMBRO 2015
PRANCHA: **07/07**